



# VALKYRIE

## MECHANICAL JV, LLC

### Every Commercial Application

- Military bases
- Federal buildings
- State buildings
- Correctional institutes
- Offices and High Rises
- Manufacturing facilities
- Computer / Server rooms
- Special use facilities

### Complete Design/ Build Capabilities

Valkyrie Mechanical is a preferred solution for our clients General Construction needs. We have the foresight and follow-through to provide a clean and smooth solution. Our QC, QA and Safety team will insure you receive a safe, quality final product you desire.

### SAFETY

DART - 0.0 / EMR - 1.0 / TRC - 1.0  
CPR / AED and First Aid trained  
OSHA 10 / OSHA 30 Certified



### HVAC

- Air Handler
- Condenser
- Coils
- Heat Pump
- Ventilation
- Furnace
- Sheet Metal Fabrication
- Variable Air Volume (VAV)

### ELECTRICAL

- Switch Gear
- Panels
- Breakers
- High Voltage
- Low Voltage
- Rewire
- Transformer
- Lighting
- Equipment Connections

### PLUMBING

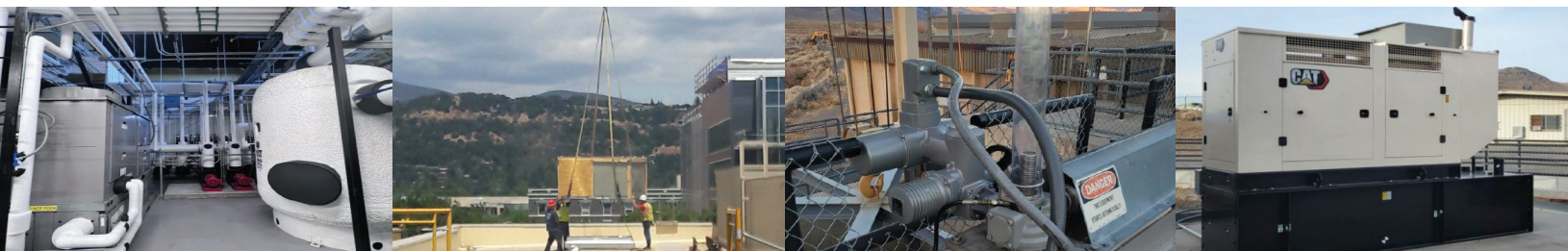
- Boiler
- Chiller
- Cooling Tower
- Pumps
- Compressor
- Water Treatment
- Complete Piping
- Lift Station / De-watering

### CONTROLS

- DDC
- BMS / BMCS
- Energy Management
- Variable Speed Drives
- Automation
- Programming
- Graphics / Interface

### GENERAL CONSTRUCTION

- Excavation
- Concrete
- Structural Steel
- Framing/Carpentry
- Drywall & Finish
- Painting
- Roofing
- Acoustic Ceiling



231 Travis Court, Suisun City, CA 94585 | [www.SHMechanicalinc.com](http://www.SHMechanicalinc.com) | 707.287.7982

10641 Prospect Ave, Santee, CA 92071 | [www.PMCcontracting.com](http://www.PMCcontracting.com) | 619.456.4562